

Model:
18061

3/8" Impact Wrench

Free Speed 8,500 RPM

Air Motor and Machine Parts.

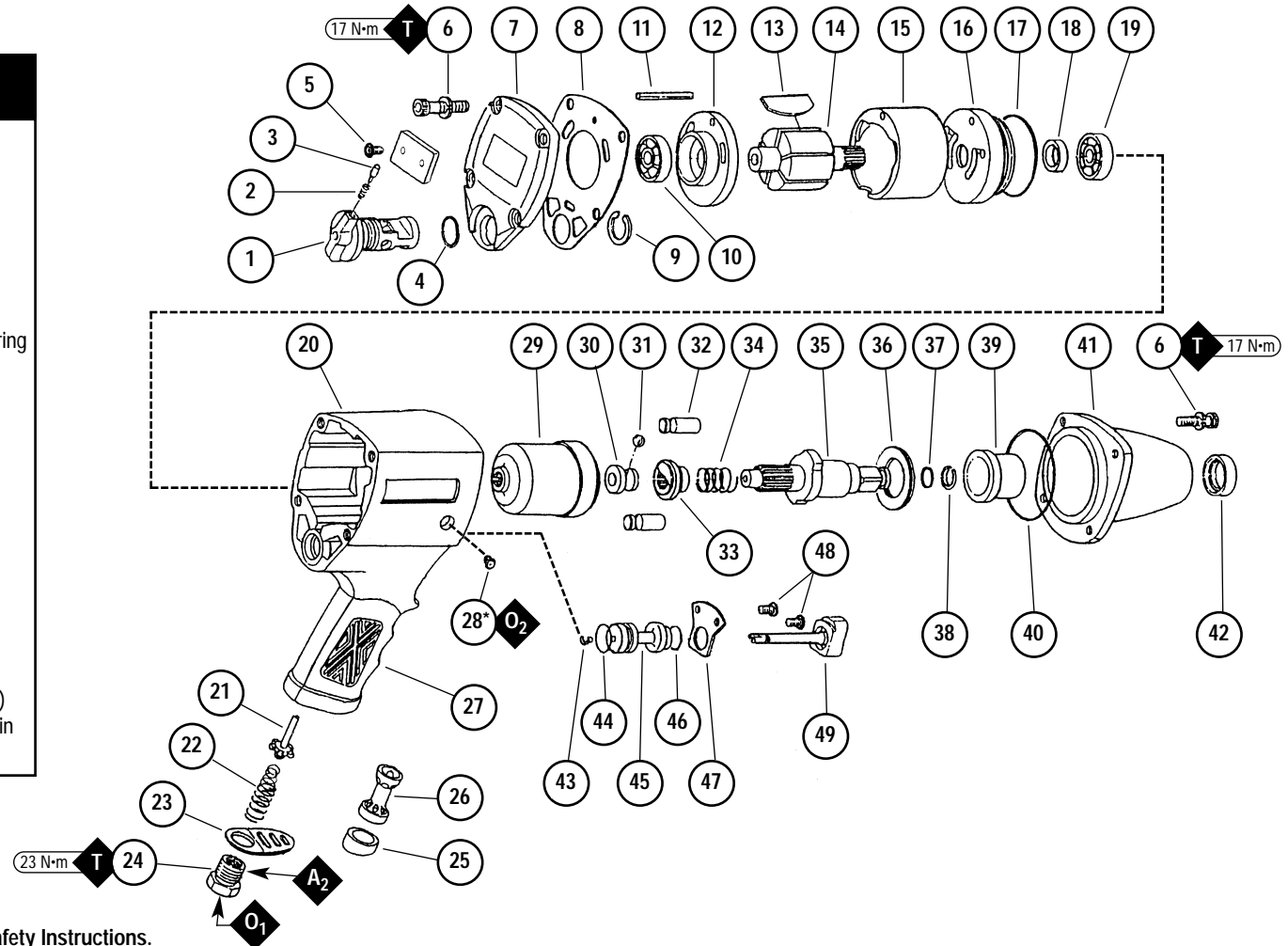
Key	
O	Oil: O ₁ = Air Lube O ₂ = SAE 20 Grade Oil
A	Adhesive: A ₂ = Loctite #271
T	Torque: N•m x 8.85 = In. - lbs.

! WARNING

Always operate, inspect and maintain this tool in accordance with the Safety Code for portable air tools (ANSI B186.1) and any other applicable safety codes and regulations. Please refer to Dynabrade's Warning/Safety Operating Instructions for more complete safety information.

Index Key

No.	Part	Description
1	18709	Air Reg. Reverse
2	18710	Spring
3	18711	Stop Pin
4	18659	O-Ring
5	18696	Rivet Screw (2)
6	18694	Screw w/ Washer (8)
7	18708	End Cap
8	18707	End Gasket
9	18712	C-Ring
10	18681	Ball Bearing
11	18717	Guide Pin
12	18713	Rear Plate
13	18715	Rotor Blade (4/pkg.)
14	18714	Rotor
15	18716	Cylinder
16	18721	Front Plate
17	18720	O-Ring
18	18719	Oil Seal
19	18718	Ball Bearing
20	18701	Motor Housing
21	18665	Valve Stem
22	18666	Throttle Spring
23	18706	Exhaust Deflector
24	18668	Hose Adapter
25	18705	Rubber Support
26	18704	Power Silencer
27	18735	Rubber Handle
28	18652	Oil Plug
29	18722	Hammer Cage
30	18723	Cam Ball Pilot
31	18724	Cam Ball
32	18725	Hammer Pin (2)
33	18726	Hammer Cam
34	18727	Cam Release Spring
35	18728	Std. Anvil 3/8" sq.
36	18729	Anvil Spacer
37	18730	O-Ring
38	18731	Retaining Ring
39	18733	Anvil Bushing
40	18734	O-Ring
41	18732	Steel Housing
42	18672	Oil Seal
43	18653	E-Ring
44	18654	O-Ring
45	18655	Throttle Bushing
46	18654	O-Ring
47	18703	Stop Cover
48	18658	Tapping Screw (2)
49	18702	Throttle Trigger Pin



* Fill Amount - 5/8 FL. OZ. or (15 cc).

See reverse side for Important Operating, Maintenance and Safety Instructions.

Autobrade Red Important Operating, Maintenance and Safety Instructions

Carefully read all instructions before operating or servicing any Dynabrade® Abrasive Power Tool.

Warning: Hand, wrist and arm injury may result from repetitive work motion and overexposure to vibration.

Important: All Dynabrade air tools must be used with a Filter-Regulator-Lubricator to maintain all warranties.

Operating Instructions:

Warning: Eye, face and body protection must be worn while operating power tools. Failure to do so may result in serious injury or death. Follow safety procedures posted in workplace.

1. With power source disconnected from tool, securely fasten abrasive/accessory on tool.
2. Install air fitting into inlet bushing of tool. **Important:** Secure inlet bushing of tool with a wrench before attempting to install the air fitting to avoid damaging valve body housing.
3. Connect power source to tool. Be careful not to depress throttle lever in the process.
4. Check tool speed with tachometer. If tool is operating at a higher speed than the RPM marked on the tool or operating improperly, the tool should be serviced to correct the cause before use.

Maintenance Instructions:

1. Check tool speed regularly with a tachometer. If tool is operating at a higher speed than the RPM marked on the tool, the tool should be serviced to correct the cause before use.
2. Some silencers on air tools may clog with use. Clean and replace as required.
3. All Dynabrade rotary vane style air motors should be lubricated. Dynabrade recommends one drop of air lube per minute for each 10 SCFM (example: if the tool specifications state 40 SCFM, set the drip rate of your filter-lubricator at 4 drops per minute). Dynabrade Air Lube (P/N 95842: 1pt. 473ml.) is recommended.
4. An Air Line Filter-Regulator-Lubricator must be used with this air tool to maintain all warranties. Dynabrade recommends the following: **11405** Air Line Filter-Regulator-Lubricator — Provides accurate air pressure regulation, two-stage filtration of water contaminants and micro-mist lubrication of pneumatic components. Operates 40 SCFM @ 100 PSI has 3/8" NPT female ports.
5. Use only genuine Dynabrade replacement parts. To reorder replacement parts, specify the **Model #**, **Serial #**, and **RPM** of your machine.
6. Mineral spirits are recommended when cleaning the tool and parts. Do not clean tool or parts with any solvents or oils containing acids, esters, keytones, chlorinated hydrocarbons or nitro carbons.

Safety Instructions:

Products offered by Dynabrade should not be converted or otherwise altered from original design without expressed written consent from Dynabrade, Inc.



- **Important:** User of tool is responsible for following accepted safety codes such as those published by the American National Standards Institute (ANSI).
- Operate machine for one minute before application to workpiece to determine if machine is working properly and safely before work begins.
- Always disconnect power supply before changing abrasive/accessory or making machine adjustments.
- Inspect abrasives/accessories for damage or defects prior to installation on tools.
- Please refer to Dynabrade's Warning/Safety Operating Instructions Tag (Reorder No. 95903) for more complete safety information.
- **Warning:** Hand, wrist and arm injury may result from repetitive work, motion and overexposure to vibration.

Autobrade Red Tool Warranty

Following the reasonable assumption that any inherent defect which might prevail in a product will become apparent to the user within **6 months** from the date of purchase, "Autobrade Red" tools are warranted against defects in workmanship and materials under normal use and service.

We shall, at our option, repair or replace at our factory, any "Autobrade Red" tool which shall, within 6 months after delivery to the original purchaser, indicate upon our examination to have been defective.

Our obligation is contingent upon proper use of "Autobrade Red" tools in accordance with factory recommendations, instructions and practices.

The warranty shall not apply in these cases:

1. Normally wearable parts such as bearings, rotor blades, etc.
2. Consumables such as sanding pads, etc.
3. Misuse, neglect in maintaining tool or tool modification.
4. Lack of lubrication or evidence of rust, dirt or corrosion.
5. Tools requiring normal tune-up or cleaning.
6. Tools being used after they are badly worn such as using ratchet with worn yoke.
7. Ratchets, anvils damaged by excessive hand torquing.
8. Use in production-type applications.

Products to be considered for warranty must be sent back to our factory, transportation prepaid by the user. Please send tool back to attention of "Repair Department" with note fully explaining the nature of the problem along with a copy of original invoice indicating model and serial number.

Return product to:

Dynabrade, Inc.

Attn: Repair Department

8989 Sheridan Dr.

Clarence, NY 14031

Visit our Web Site: www.dynabrade.com

