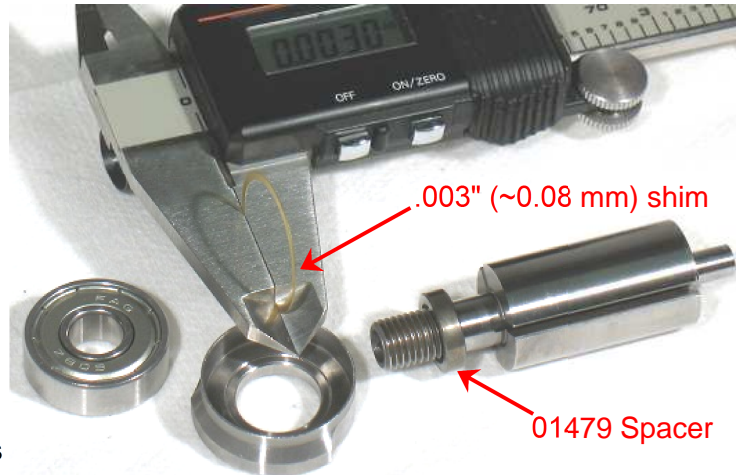


Assembly Instructions - 0.4 hp. Air Motor (Straight)

Motor Assembly:

1. Install the **01479** Spacer onto the rotor.
2. Select **.003"** (~0.08 mm) shim thickness from the **54529** Shim Pack. Install shims in the **01478** Front Bearing Plate.
3. Install the **02649** Bearing into the front bearing plate and onto the rotor.



Notice: Planetary geared models use the **RAISED CENTER** of the **96240** Bearing Press Tool and the arbor press to install the **02649** Bearing with the bearing plate onto the rotor.

4. Fasten the rotor in the vise with aluminum or bronze jaws so that the spindle is pointing up. Use a 12 mm socket and torque wrench to install the **01435** Collet Body. (T to 17 N•m/~150 in. lbs.)
5. Pull the front bearing plate forward to take play out of the bearing. Use a **.001"** (~0.03 mm) thick feeler gauge to check the clearance between the bearing plate and rotor.
6. Clearance should be **.001"**-.**.0015"** (~0.03-0.04 mm). **Notice:** Repeat steps 2-5 if clearance needs further adjustment. Install or remove shims as required.



Visit Our Website: www.dynabrade.com

Email: customer.service@dynabrade.com

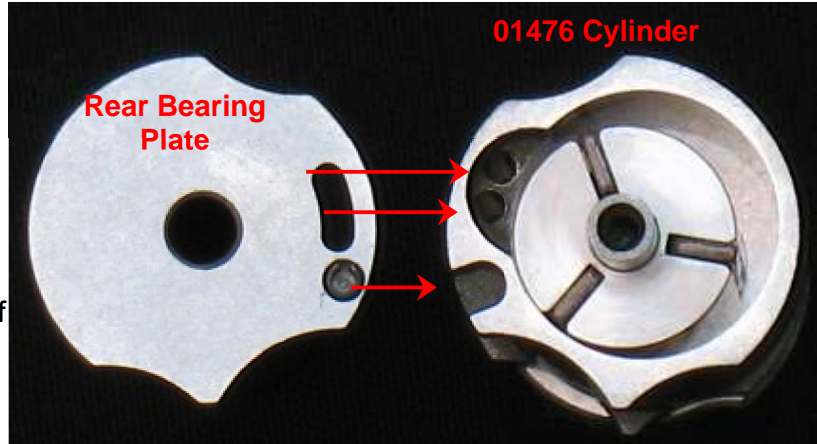
DYNABRADE, INC. • DYNABRADE INTERNATIONAL
8989 Sheridan Drive, Clarence, New York 14031-1490 USA
Telephone: (716) 631-0100 • Fax: 716-631-2073 • Int'l Fax: 716-631-2524

DYNABRADE EUROPE S.à.r.l.
Zone Artisanale, L-5485 Wormeldange—Haut, Luxembourg
Telephone: +352 768 494 1 • Fax: +352 768 495

DYNABRADE DO BRASIL
Rua Oneda, 632, Sao Bernardo do Campo • SP – CEP 09895-280
Telephone: 55-11-4390-0133 • Fax: 55-11-4399-1067

DYNABRADE INDIA ABRASIVE POWER TOOLS Pvt Ltd.
EL-54, TTC Industrial Area, M.I.D.C. Mahape, Electronic Zone, Navi Mumbai - 400705
Maharashtra, India • Telephone: +91 22 2763 2226 • Fax: +91 22 2763 2228

7. Use Dynabrade Air Lube **95842** 10W/NR (or equivalent) to lubricate the **01480** Vanes. Install the vanes in the rotor.
8. Install the **01476** Cylinder and the **02676** Rear Bearing Plate so that the air inlet openings line-up.
9. Position the **02696** Bearing onto the bearing journal of the rotor.
10. Use the **RAISED CENTER** of the **96242** Bearing Press Tool and the arbor press to install the **02696** Bearing onto the rotor, and into the **02676** Rear Bearing Plate.
IMPORTANT: Carefully press the bearing until the plate just touches the cylinder. This will establish a "snug-fit" between the bearing plates and the cylinder.



Complete Motor Assembly

Notice: The rear bearing should sit below the outside surface of the rear bearing plate.

Visit Our Website: www.dynabrade.com

Email: customer.service@dynabrade.com

DYNABRADE, INC. • DYNABRADE INTERNATIONAL
8989 Sheridan Drive, Clarence, New York 14031-1490 USA
Telephone: (716) 631-0100 • Fax: 716-631-2073 • Int'l Fax: 716-631-2524

DYNABRADE DO BRASIL
Rua Oneda, 632, Sao Bernardo do Campo • SP – CEP 09895-280
Telephone: 55-11-4390-0133 • Fax: 55-11-4399-1067

DYNABRADE EUROPE S.à.r.l.
Zone Artisanale, L-5485 Wormeldange—Haut, Luxembourg
Telephone: +352 768 494 1 • Fax: +352 768 495

DYNABRADE INDIA ABRASIVE POWER TOOLS Pvt Ltd.
EL-54, TTC Industrial Area, M.I.D.C. Mahape, Electronic Zone, Navi Mumbai - 400705
Maharashtra, India • Telephone: +91 22 2763 2226 • Fax: +91 22 2763 2228

11. Apply a small amount of Loctite #243 (or equivalent) to the threads of the governor assembly and carefully install the governor onto the rotor. **LEFT HAND THREAD**
Turn counterclockwise. (T to 0.7 N•m/~6 in. lbs.)



**LEFT HAND THREAD:
Turn counterclockwise.
(T to 0.7 N•m/~6 in. lbs.)**



12. Fasten the **96399** Hex Key (12 mm) in a vise with aluminum or bronze jaws so that it is pointing up. Place the **45305** or **45307** Housing Core onto the 12 mm hex key so that the air inlet is pointing up.
13. Refer to the parts page or tool manual and follow the exploded view instructions to assemble the muffler and valve components.
14. Install the **01564** Air Control Ring onto the **01578** or **94523** Inlet Adapter and apply a small amount of Loctite #567 to the male threads of the inlet adapter.
15. Use a torque wrench to install the inlet adapter.
(T to 28 N•m/~250 in. lbs.)



Visit Our Website: www.dynabrade.com

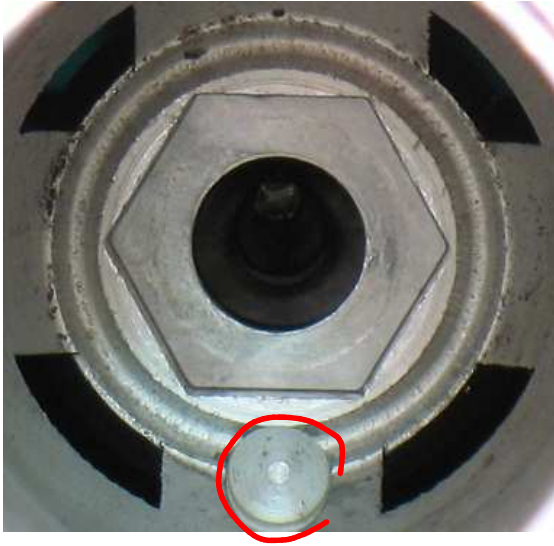
Email: customer.service@dynabrade.com

DYNABRADE, INC. • DYNABRADE INTERNATIONAL
8989 Sheridan Drive, Clarence, New York 14031-1490 USA
Telephone: (716) 631-0100 • Fax: 716-631-2073 • Int'l Fax: 716-631-2524

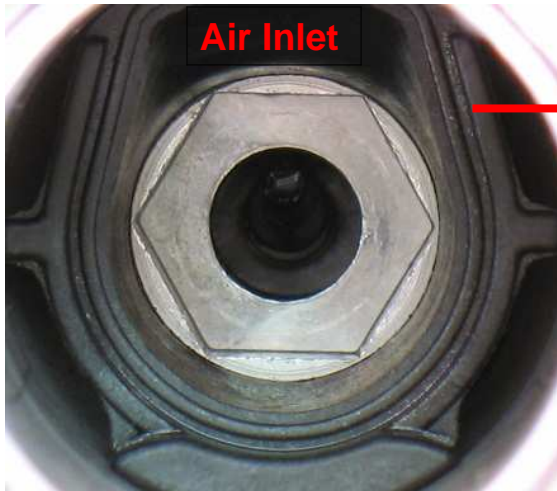
DYNABRADE EUROPE S.à.r.l.
Zone Artisanale, L-5485 Wormeldange—Haut, Luxembourg
Telephone: +352 768 494 1 • Fax: +352 768 495

DYNABRADE DO BRASIL
Rua Oneda, 632, Sao Bernardo do Campo • SP – CEP 09895-280
Telephone: 55-11-4390-0133 • Fax: 55-11-4399-1067

DYNABRADE INDIA ABRASIVE POWER TOOLS Pvt Ltd.
EL-54, TTC Industrial Area, M.I.D.C. Mahape, Electronic Zone, Navi Mumbai - 400705
Maharashtra, India • Telephone: +91 22 2763 2226 • Fax: +91 22 2763 2228



17. Install the **45320** Governor Chamber.



16. Line-up the **45320** Governor Chamber pin with the hole on the inside of the **45305** or **45307** Housing Core.



The **45320** Governor Chamber installed in **45305** or **45307** Housing.

18. Carefully line-up and install the motor assembly.



Motor Assembly Complete.

Visit Our Website: www.dynabrade.com

DYNABRADE, INC. • DYNABRADE INTERNATIONAL
8989 Sheridan Drive, Clarence, New York 14031-1490 USA
Telephone: (716) 631-0100 • Fax: 716-631-2073 • Int'l Fax: 716-631-2524

DYNABRADE DO BRASIL
Rua Oneda, 632, Sao Bernardo do Campo • SP – CEP 09895-280
Telephone: 55-11-4390-0133 • Fax: 55-11-4399-1067

Email: customer.service@dynabrade.com

DYNABRADE EUROPE S.à.r.l.
Zone Artisanale, L-5485 Wormeldange—Haut, Luxembourg
Telephone: +352 768 494 1 • Fax: +352 768 495

DYNABRADE INDIA ABRASIVE POWER TOOLS Pvt Ltd.
EL-54, TTC Industrial Area, M.I.D.C. Mahape, Electronic Zone, Navi Mumbai - 400705
Maharashtra, India • Telephone: +91 22 2763 2226 • Fax: +91 22 2763 2228